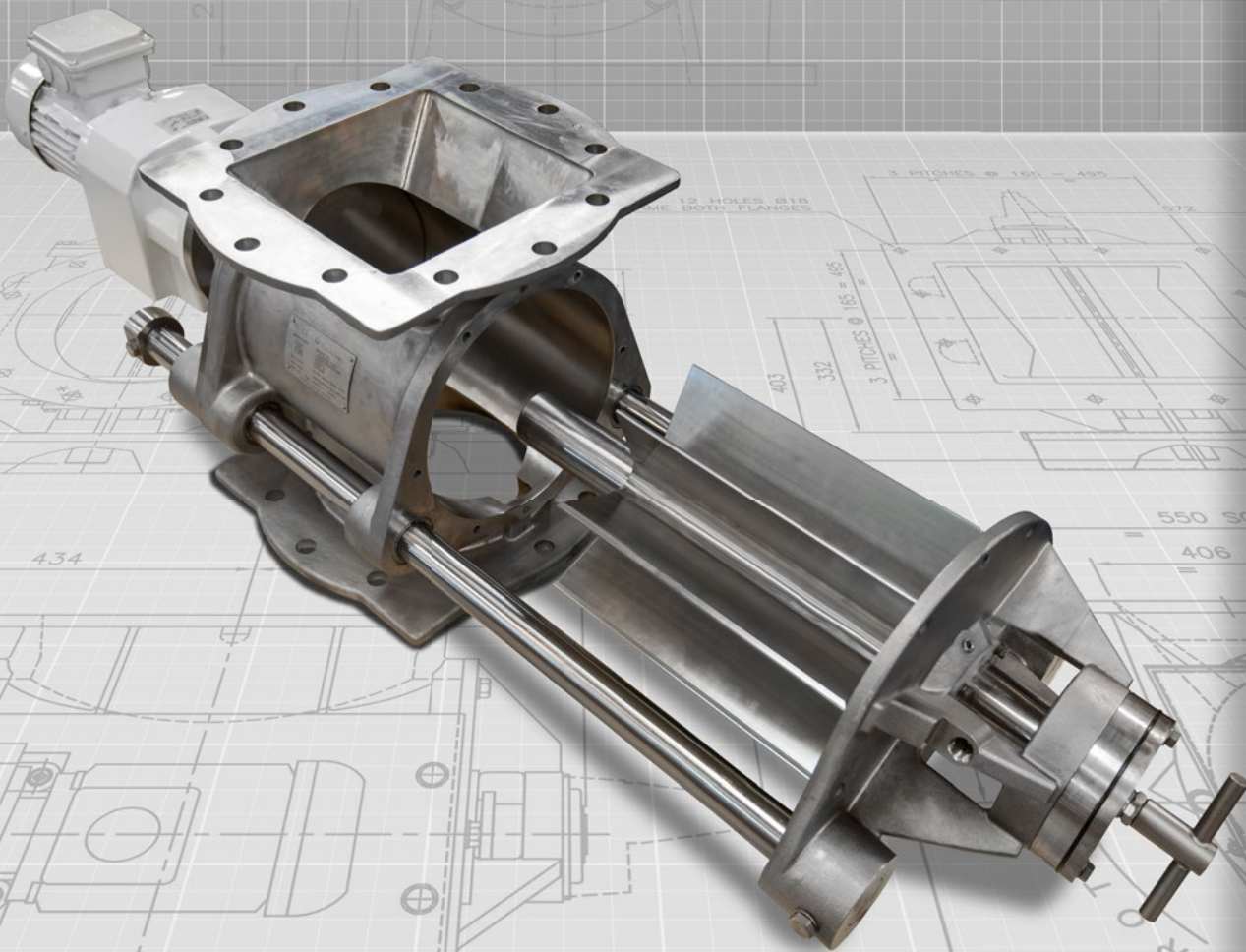


ROTOLOK

everything under control...



EASY CLEAN ROTARY VALVE

ROTOLOK UK

1 Millennium Place
Tiverton Business Park
Tiverton
Devon
EX16 6SB
United Kingdom

Tel: +44 (0) 1884 232232
Fax: +44 (0) 1884 232200

www.rotolok.co.uk
sales@rotolok.co.uk



INTRODUCTION

Rotolok's Easy Clean Rotary Valve is complimentary to our Linear Rail Easy Release Rotary Valve. The Easy Clean Valve utilises two round bars connected to the end covers and body. The body and end covers have been developed so that the rail housings are incorporated into the cast components to make it a compact assembly.

The rails are designed to extract and fully remove the rotor from the body. A set of stops are fitted to prevent the rails from being removed accidentally during maintenance. Both end covers can be removed from the main assembly with the new rail system. Internal access to the valve can be achieved from either side. The rotor is extracted from the valve at the non-drive end.

A direct drive helical gearmotor is mounted to the valve to drive the rotor.

The new product range contact surfaces of the valve are manufactured in 316 Stainless Steel and can be polished to a 150 grit finish, ensuring that there are no lodgement points allowing the product to flow smoothly. Furthermore, the valve is equipped with a round bar rail system allowing for quick and easy removal of the rotor from the valve body. This incorporated feature substantially reduces the amount of downtime and the number of man hours required for cleaning and maintenance of the rotor and valve internals.

The Easy Clean Valve has a square inlet and a round outlet with universal shaped flanges suitable for both round and square drill patterns. This design will accommodate the majority of recognised standards.

SPECIFICATION

BODIES

Cast stainless steel 316 precision bored

END COVERS

Cast stainless steel 316 precision machined with spigot location in body for concentricity

ROTOR

Fabricated Stainless Steel precision machined Scalloped pockets

BEARINGS

Sealed for life ball type, mounted outboard

SHAFT SEAL

Food Quality Seal Housing fitted with Quad Rings

DRIVE SYSTEM

Shaft Mounted Direct Drive Helical Gearmotor

RAILS

Corrosion resistant stainless steel bars X90

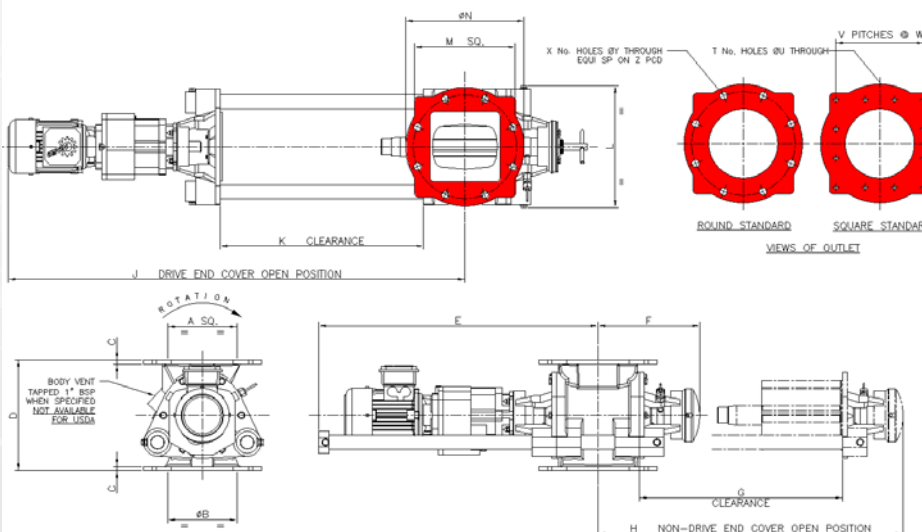
RAIL BEARINGS

Compact sealed linear ball bearings

STANDARD FEATURES

- Cast body and end covers for a robust assembly
- Precision machining of components for minimum clearances and good air lock capabilities
- Heavy shaft and rail diameters and removal system that minimises deflection and chance of rotor-body contact when removing for cleaning
- Outboard easy remove bearings for non-contamination
- Rotor lock back sensor
- Sealing arrangement that can be cleaned and reset
- Universal flanges that accommodate square and round connections

STANDARD DIMENSIONS



OPTIONAL EXTRAS

- Air purged for shaft seals
- Pocket purge (Non-USDA)
- Body venting (Non-USDA)
- Safety sensors on the end covers indicating the valve is open
- Special rotor designs (Non-USDA)
- Rotor speed variations
- ATEX Category 1 Certified for use in all DSEAR Zones

SIZE	A SQ	ØB	C	D	E	F	G	H	J	K	L	M	ØN	T	ØU	V	W	X	ØY	Z
150	152.4	150	12	270	695	270	510	780	1135	510	320	240	280	12	12	3	70	8	22	241
200	203	200	13	320	810	295	589	885	1325	589	355	292	343	12	14	3	84.67	8	22	299
250	254	250	13	375	926	329	672	1001	1440	672	395	362	406	12	14	3	106	12	25	362
300	305	300	17	420	1050	391	767	1158	1605	767	455	419	483	16	14	4	92	12	25	432

