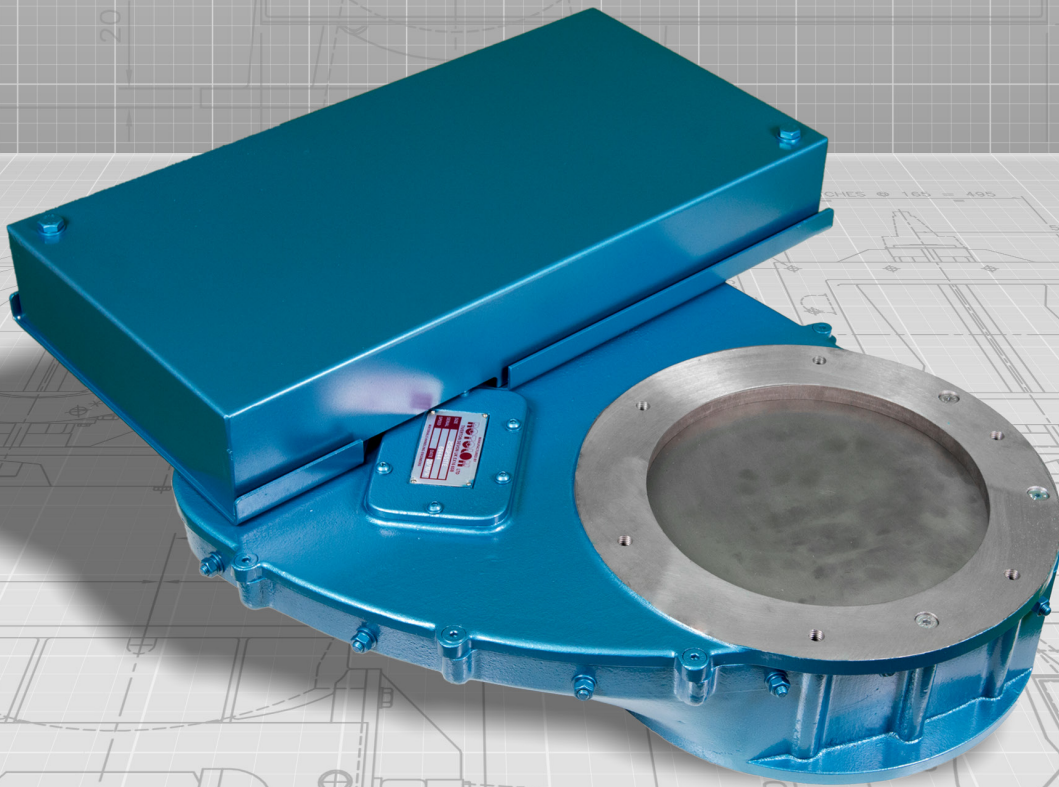


**ROTOLOK**

everything under control...



ROTOLOK ROTOSLIDE

**ROTOLOK UK**

1 Millennium Place  
Tiverton Business Park  
Tiverton  
Devon  
EX16 6SB  
United Kingdom

Tel: +44 (0) 1884 232232  
Fax: +44 (0) 1884 232200

[www.rotolok.co.uk](http://www.rotolok.co.uk)  
[sales@rotolok.co.uk](mailto:sales@rotolok.co.uk)



## INTRODUCTION

Slide Valves are used for controlling the flow of powders, pellets and granules from the inlets or outlets of equipment.

Rotolok have been making an extensive range of fabricated units to suit the general industrial fields and the Rotoslide, manufactured in cast aluminium with stainless steel trim, specifically caters for the food and chemical industries.

Manufactured in five basic sizes: 150, 200, 250, 300 and 350mm of circular inlet design and with either manual or pneumatic actuation.

Rotolok's Rotoslide has a different concept than the majority of slide valves on the market, in as much that it is totally enclosed and, whether it is hand or pneumatically operated, the basic principal of using a pivot holds the slide plate in a positive fixed position, while the slide extremity is supported by nylon studs on stainless steel pins.

It has been designed to address the health and safety requirements for fugitive emissions with the slide plate always being enveloped, enclosed and dust tight to the surrounding environment.

## SPECIFICATIONS

**BODY**  
LM25 Cast Aluminium

**SLIDE PLATE**  
Stainless Steel

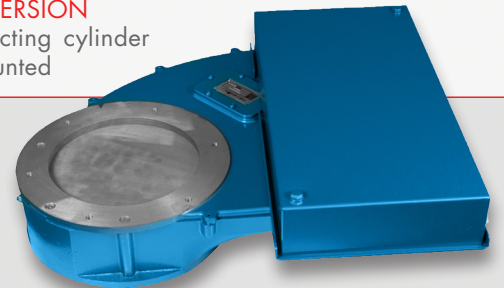
**SLIDE PLATE SUPPORT**  
Nylon studs supported by  
Stainless Steel screws

**HAND OPERATED**  
Positive easy action handle

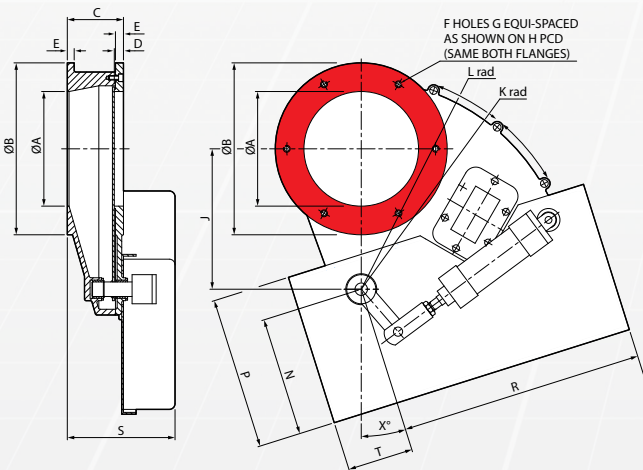
**PNEUMATIC VERSION**  
One double acting cylinder  
rear clevis mounted

**SOLENOID VALVE  
(PNEUMATIC ONLY)**  
2 position 5 port single  
solenoid spring return

**LIMIT SWITCHES**  
Mounted to indicate open/  
closed position.  
Optional on manual version



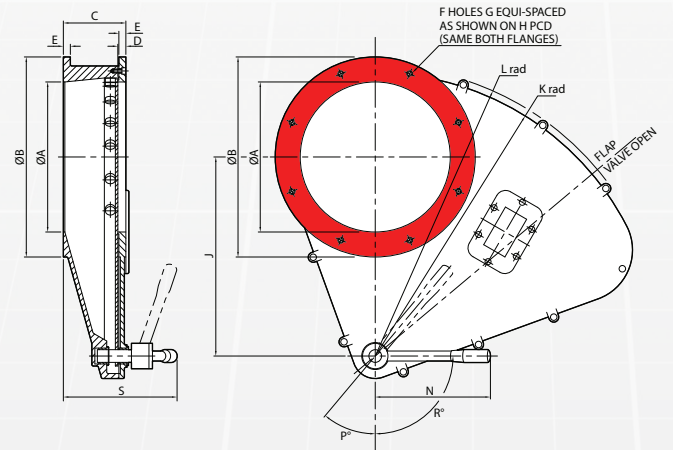
## PNEUMATIC ROTOSLIDE



All dimensions are in millimetres

SIZES	A	B	C	D	E	F	G	H	J	K	L	N	P	R	S	T	X°
150	150	230	98	16	12	6	M10	195	162	254	268	220	267	425	197	115	0°
200	200	300	98	16	12	6	M12	260	245	365	380	208	266	425	197	115	17.5°
250	250	350	125	16	12	6	M12	310	316	460	474	245	316	440	224	170	17.5°
300	300	400	125	16	14	8	M12	360	398	566	580	245	316	440	224	170	15°
350	350	528	140	22	20	12	M20	470	468	664	678	248	316	427	236	183	6°

## MANUAL ROTOSLIDE



All dimensions are in millimetres

SIZES	A	B	C	D	E	F	G	H	J	K	L	N	P	R	S
150	150	230	98	16	14	6	M10	195	162	25	268	155	60	60	166
200	200	300	98	16	12	6	M12	260	245	380	365	185	45	60	185
250	250	350	125	16	12	6	M12	310	316	474	460	230	10	90	230
300	300	400	125	16	14	8	M12	360	398	566	580	230	40	90	228
350	350	528	140	22	20	12	M20	470	468	664	678	300	40	95	274

Dimensions are approximate and subject to change without notice  
Planning-in detail for general guidance only  
(To cover safety aspects ask for our safety leaflets)  
Drillings are Rotolok standards. Variations can be made.

