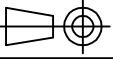
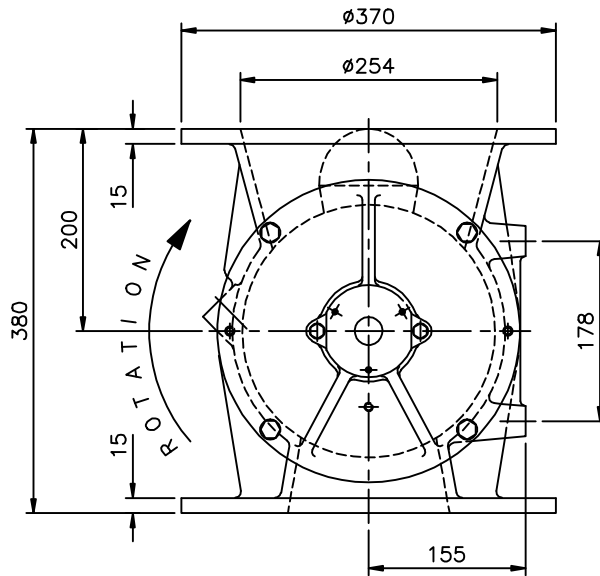
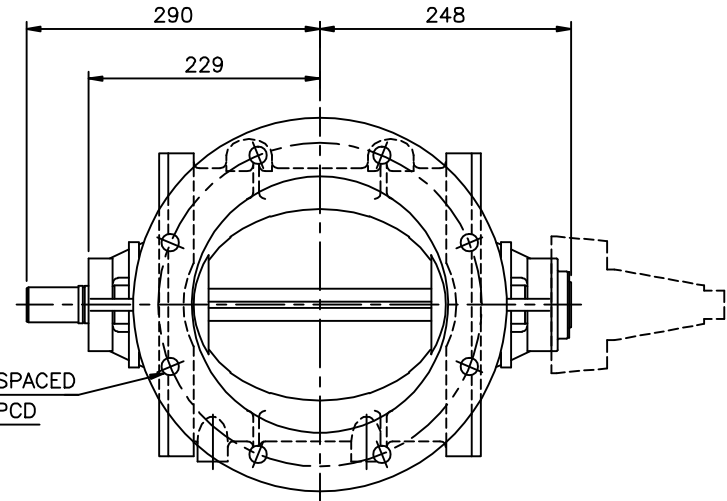


IF IN DOUBT ASK

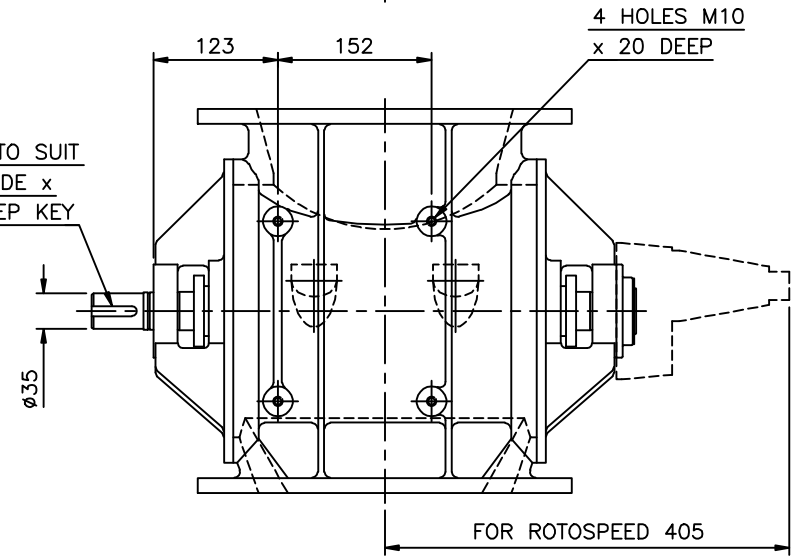


OPTIONS

1. FOR EXPOSED INLET OR OUTLET SAFETY GUARDS ARE REQUIRED.
2. 2 OFF 1" BSP (OR NPT) BODY VENT ON NON-DRIVE SIDE.
3. 1/8" BSP (OR NPT) AIR PURGED END COVER GLANDS.
4. ROTOSPEED SENSOR AS INDICATED.
5. INSPECTION DOOR ON NON-DRIVE SIDE (NOT SHOWN) WITH 194 x 64mm APERTURE.



KEYWAY TO SUIT
10mm WIDE x
8mm DEEP KEY



E	OPTIONS & ROTOSPEED ADDED	(1442)
D	PICTORIAL REVIEW	
C	SHAFT WAS $\phi 28$	(662)
B	IMPERIAL EQUIVALENT INLET	(266)
AMENDMENTS		



ROTOLOK LTD

everything under control . . .

**BAMPTON INDUSTRIAL ESTATE
BAMPTON, DEVON, EX16 9NG.
Tel.: (01398) 331606/7**

This drawing is the property of ROTOLOK LTD and is loaned subject to the condition that it shall not be reproduced, copied, loaned or submitted to others without our consent.

ITEM	PART No.	QTY	DESCRIPTION	MATL.	DWG REF
CLIENT			TITLE		
STANDARD			BARESHAFT ARRANGEMENT 250mm ROUND ROTARY VALVE		
SCALE N.T.S.			DRAWING No.		
DRAWN			11647		
CHECKED			ISSUE E		
APPROVED					
10/12/93					