

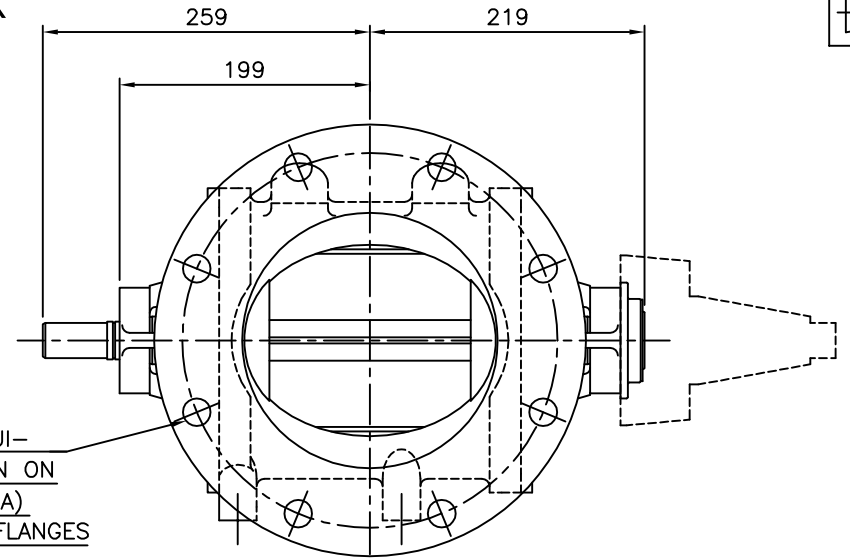
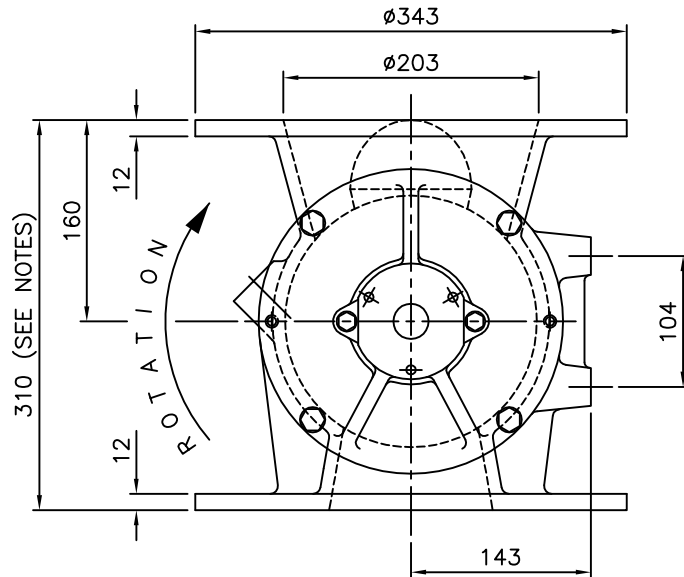
IF IN DOUBT ASK

OPTIONS

1. FOR EXPOSED INLET OR OUTLET SAFETY GUARDS ARE REQUIRED.
2. 2 OFF 1" BSP (OR NPT) BODY VENT ON NON-DRIVE SIDE.
3. 1/8" BSP (OR NPT) AIR PURGED END COVER GLANDS.
4. ROTOSPEED SENSOR AS INDICATED.
5. INSPECTION DOOR ON NON-DRIVE SIDE (NOT SHOWN) WITH 166 x 50mm APERTURE.

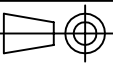
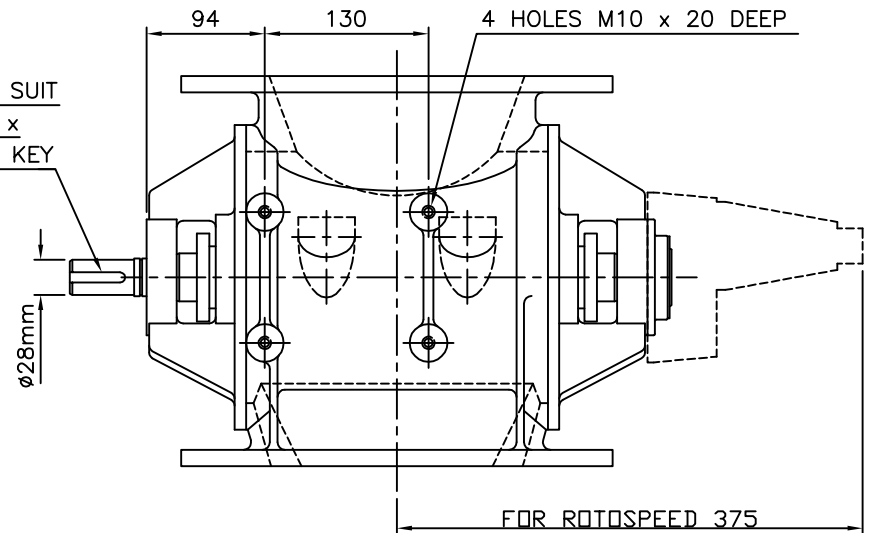
NOTES

1. STAINLESS STEEL OVERALL HEIGHT 315mm




8 HOLES  $\phi 22$  EQUI-SPACED AS SHOWN ON 298 PCD (150 ASA) PCD SAME BOTH FLANGES

KEYWAY TO SUIT 8mm WIDE x 7mm DEEP KEY



E	OPTIONS & ROTOSPEED ADDED	(1442)
D	MOTOR BOSS HEIGHT WAS 150	
C	OVERALL HEIGHT AMENDED	(1372)
B	IMPERIAL EQUIVALENT INLET	(266)
<b>AMENDMENTS</b>		



# ROTOLOK LTD

everything under control . . .

**BAMPTON INDUSTRIAL ESTATE  
BAMPTON, DEVON, EX16 9NG.  
Tel.: (01398) 331606/7**

This drawing is the property of ROTOLOK LTD and is loaned subject to the condition that it shall not be reproduced, copied, loaned or submitted to others without our consent.

ITEM	PART No.	QTY	DESCRIPTION	MATL.	DWG REF
CLIENT			ASA STANDARD	TITLE BARESHAFT ARRANGEMENT 200mm ROUND ASA ROTARY VALVE	
SCALE			N.T.S.	DRAWING No.  10700	
DRAWN	CHECKED	APPROVED			
$\Delta B$					
1/12/93			ISSUE E		